

Inverter Duty AC Gearmotors (continued)

DESIGNED FOR ROBUSTICITY™

Specifications

Gearhead		Motor	Product Line Features
Gearing:	AGMA class 9 heat treated steel	Motor Type: 230V, 3 phase, 6-90 Hz	<ul style="list-style-type: none"> Global safety recognition: UL, CUL Insulation system designed to meet NEMA MG 1 Section 31 Ambient temperature 0° to 40°C Continuous duty
Geartrain:	Engineered to handle up to 200% shockloading	Rotation: Reversible	
Housing:	Precision machined die cast aluminum	Bearings: Double shielded ball bearing support	
Lubrication:	Lifetime oil bath	Insulation: Class F (155°C)	
Bearings:	Needle and thrust ball, or ball bearing	Enclosure: TEFC	
Shafts:	Precision ground shaft seal diameters	Thermostat: Signal type; closed	
Mounting:	All position		

Additional Information

Wiring diagram pages 88-91

See pages 86-87 for additional accessories

INVERTER DUTY GEARMOTORS

650 Series 3-Phase Inverter Duty 230V

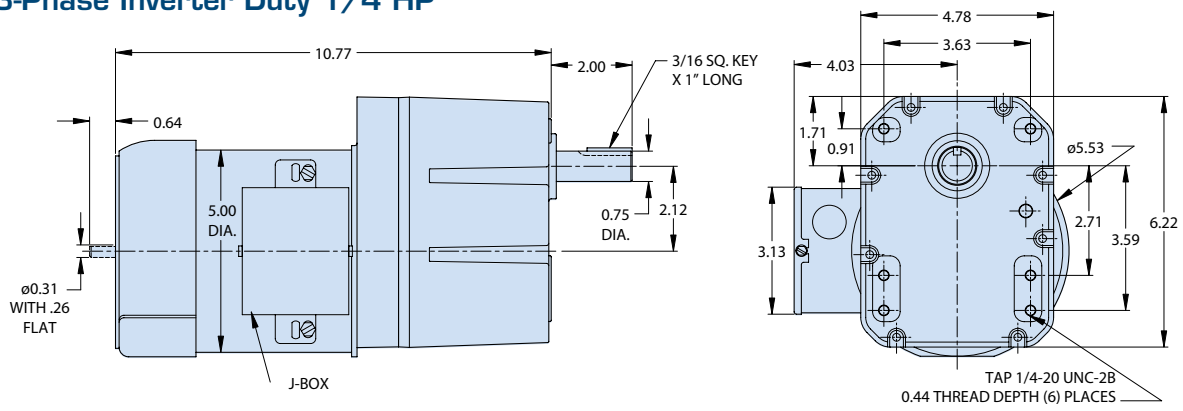
Part Number	Rated Speed RPM @ 6hz	Rated Speed RPM @ 60hz	Rated Speed RPM @ 90hz	Rated Torque in-lbs @ 6hz	Rated Torque In-lbs @ 60hz	Rated Torque In-lbs @ 90hz	Input HP	Gear Ratio	Amps	Shipping Wt.
017-650-0029	6.0	60	90	222	222	148	1/4	28.9	0.75	23
017-650-0070	2.5	25	38	490	490	327	1/4	69.7	0.75	23
017-650-0090	1.7	17	26	722**	722**	442	1/4	89.8	0.75	23
017-650-0214	0.8	7.9	12	650**	650**	650**	1/4	214.5	0.75	23
017-651-0028	6.3	63	95	423	423	282	1/2	27.6	1.60	29

750 Series 3-Phase Inverter Duty 230V

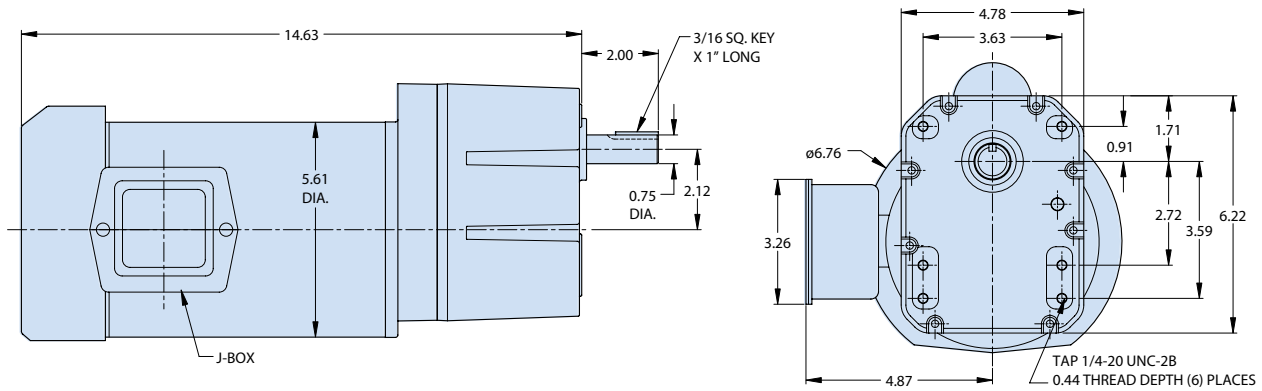
Part Number	Rated Speed RPM @ 6hz	Rated Speed RPM @ 60hz	Rated Speed RPM @ 90hz	Rated Torque in-lbs @ 6hz	Rated Torque In-lbs @ 60hz	Rated Torque In-lbs @ 90hz	Input HP	Gear Ratio	Amps	Shipping Wt.
With Mounting Bracket & Output Shaft										
027-756-4005	33	330	495	30	30	20	1/4	5.2	0.75	19.8
027-756-4010	16	160	240	58	58	39	1/4	10.3	0.75	19.8
027-756-4013	12.4	124	186	76	76	51	1/4	13.0	0.75	19.8
027-756-4020	8	80	120	108	108	72	1/4	20.5	0.75	19.8
027-756-4030	5.5	55	83	130	130	87	1/4	30.0	0.75	19.8
027-756-4045	3.8	38	57	120**	120**	80**	1/4	45.0	0.75	19.8
027-756-4060	2.8	28	42	100**	100**	67**	1/4	60.0	0.75	19.8
Hollow Shaft & Pilot Mount										
027-756-4405	33	330	495	30	30	20	1/4	5.2	0.75	16.8
027-756-4410	16	160	240	58	58	39	1/4	10.3	0.75	16.8
027-756-4413	12.4	124	186	76	76	51	1/4	13.0	0.75	16.8
027-756-4420	8	80	120	108	108	72	1/4	20.5	0.75	16.8
027-756-4430	5.5	55	83	130	130	87	1/4	30.0	0.75	16.8
027-756-4445	3.8	38	57	120**	120**	80**	1/4	45.0	0.75	16.8
027-756-4460	2.8	28	42	100**	100**	67**	1/4	60.0	0.75	16.8

** Output torque is gear limited.

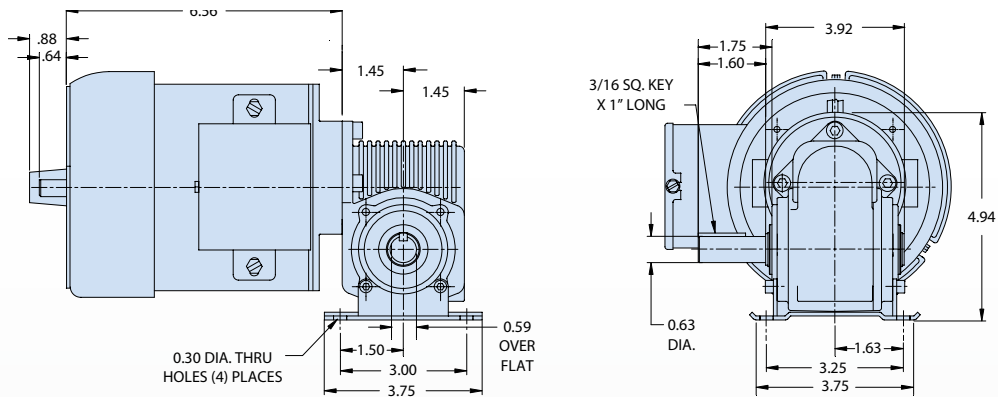
650 3-Phase Inverter Duty 1/4 HP



650 3-Phase Inverter Duty 1/2 HP



750 3-Phase Inverter Duty Standard Shaft 1/4 HP



750 3-Phase Inverter Duty Hollow Shaft 1/4 HP

